



Scan here for more information on

2027 VILLAGIO



MERCEDES BENZ® SPRINTER 4500XD
 Horsepower: 208 HP
 Torque: 332 lb. ft.
 Transmission: 9-Speed Automatic

EXTERIORS



COBALT DRIFT



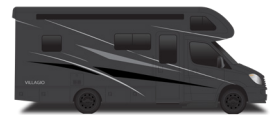
CRIMSON CURRENT



DRIFTWOOD TIDE



NIMBUS STREAM



OBSIDIAN WAKE



ATLAS LR



MOJAVE



POLARIS



TUNDRA

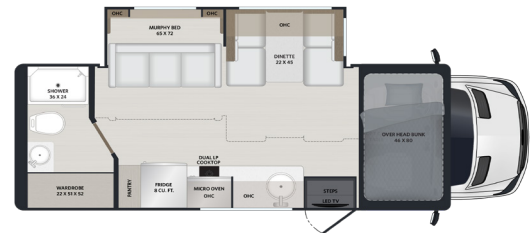
25FW CABOVER



- GENEROUS FLOOR SPACE
- DEDICATED QUEEN BED

- AMPLE CABINET STORAGE

25RM CABOVER

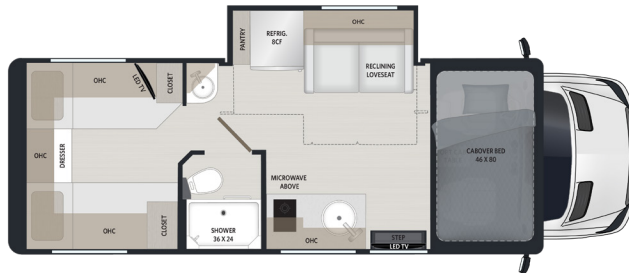


- SEAT 7-9 FOR ENTERTAINING
- SPACIOUS FLOORPLAN

- ABUNDANT COUNTER SPACE
- UNIQUE WARDROBE STORAGE

25TB CABOVER

NEW FLOORPLAN



- CONVERTIBLE TWIN BEDS THAT CONVERTS TO A KING
- SPACIOUS SLEEPING WITHOUT SLIDE OUT

POPULAR OPTIONS

- Powered Theater Seating with Tables (Replaces Dinette)
- Diamond Shield® Nano-Fusion™ Paint Protection
- (2) 100Ah Lithium Batteries (ILO 200Ah AGM Batteries)

- 330W Solar Panel Upgrade (ILO 200W)
- Cab Table
- 24" LED TV Bedroom w/wall mount (FW only)

TOP FEATURES

CAB/CHASSIS

- Mercedes Benz® Sprinter™ 4500 Cab Chassis
High-output 4-cylinder dual turbo diesel engine
- 208 HP and 332 lb. ft.
- 3125lbs of towing at 100% OCCC utilization
Unused OCCC can be added into towing capacity up to 4200lbs
- 280A alternator
- MBUX™ multimedia system with 10.25" touchscreen
Apple® CarPlay™ and Android® Auto™ wireless charging
- Safety capabilities
Rear and side view cameras, heated exterior mirrors, active lane keeping assist, active distance assist distronic, attention, brake, and traffic sign assist.

EXTERIOR

- Aerodynamic fiberglass front cap with full transitions
- Four-point hydraulic leveling with app
- Powered Girard® GG lateral arm awning with LED lights and slide toppers
- Stout side-swing baggage doors with reinforced storage and black handles
- Motion activated lighting in compartments
- Black wheels

CONSTRUCTION

- Vacuum-bonded laminated walls and floors for lasting strength
- Welded aluminum roof truss construction, vacuum-bond laminated, with a seamless crowned fiberglass exterior
- Cabover bunk reinforced welded aluminum cage frame

PLUMBING SYSTEMS

- LP Tank with remote fill and quick disconnect
- SeeLevel® tank monitoring system
- Full maintenance wet bay with exterior spray away shower, on-demand water pump, and whole-house water filtration

CHASSIS

MODEL	25FW	25RM	25TB
Wheelbase	170"	170"	170"
Front GAWR (lbs)	4,410	4,410	4,410
Rear GAWR (lbs)	7,720	7,720	7,720
GCWR (lbs)	15,250	15,250	15,250
Fuel Capacity (gal)	24.5	24.5	24.5

INTERIOR

- Soft touch padded ceiling
- Maple hardwood custom cabinetry throughout
- Sanded dovetail drawers on soft close guides
- Solid surface countertops throughout
- LED dimmable lighting
- Memory foam mattress
- Ultra soft touch vinyl furniture upholstery
- Convertible booth dinette with storage
- Jackknife sleeper sofa with storage *(RM only)*
- Porcelain macerator toilet with foot pedal flush

APPLIANCES

- 8 cu. ft., 12V refrigerator
- 2-burner LP cooktop with exhaust fan
- 1.0 cu. ft. convection microwave oven
- GE® tankless water heater
- 15,000 BTU ducted roof A/C unit featuring condensate drain and heat pump
- 18,000 BTU LP ducted gas furnace
- MaxxAir® power vents with rain sensor
Powered roof vents that keep your RV fresh, cool, and comfortable.

ELECTRIC & ENTERTAINMENT

- 3.6kW Onan LP generator with automatic generator start (AGS)
- 2,000W true sine wave inverter
- Transfer switch with surge protection
- (2) 100Ah AGM house batteries
- 200W solar panel
- Multiplex control system with bluetooth app control
- 12V holding tank heaters, gray and black tanks
- Smart LED TV in living area
- Winegard® Connect OTA antenna with Wi-Fi and 5G ready

DIMENSION & CAPACITIES

MODEL	25FW	25RM	25TB
Overall Length	25'6"	25'6"	25'6"
Overall Height	11'4"	11'4"	11'4"
Overall Width*	92.25"	92.25"	92.25"
Interior Height*	84"	84"	84"
Interior Width*	89.5"	89.5"	89.5"
Fresh Water Capacity (gal)	34	34	34
Gray Water Capacity (gal)	29	29	29
Black Water Capacity (gal)	29	29	29
LP Capacity (gal)	20.3	20.3	20.3