



Scan here for more information on

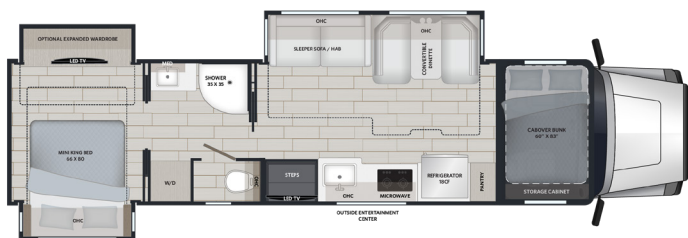
2027 **CLASSIC**

FREIGHTLINER® CASCADIA
116 DD13 (525HP) OR
126 DD16 (600 HP) OR
Torque: 1,850 lb.-ft.
Transmission: 12-Speed Automatic DT12

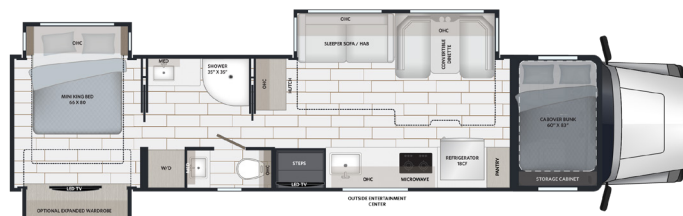
PETERBILT® 567, X15 (605 HP, 1,850 LB.-FT. TORQUE) OR
PETERBILT® 589, X15 (605 HP, 2,050 LB.-FT. TORQUE)
Transmission: Endurant 18-speed

CLASSIC - MOTORHOME

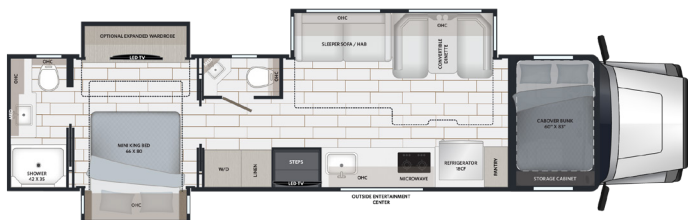
38CSB



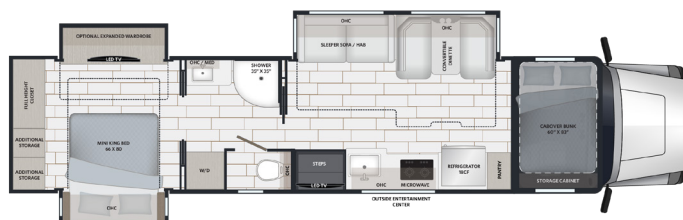
41CMB



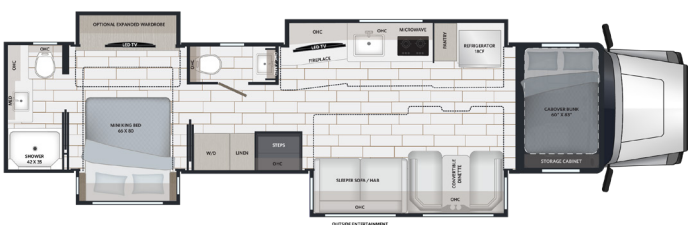
41CRB



41CRW



43CMD

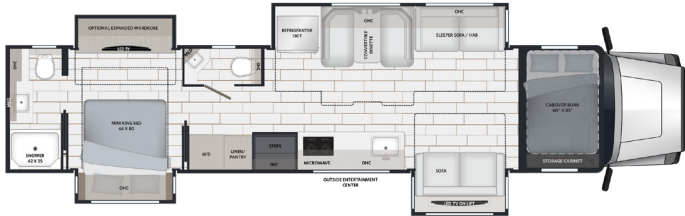


45CBF

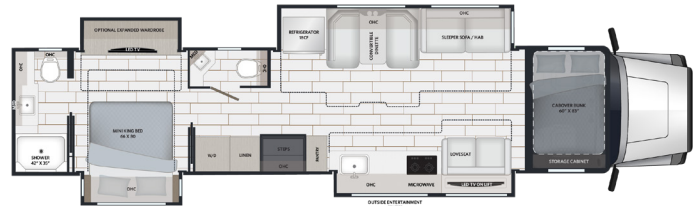


CLASSIC - MOTORHOME

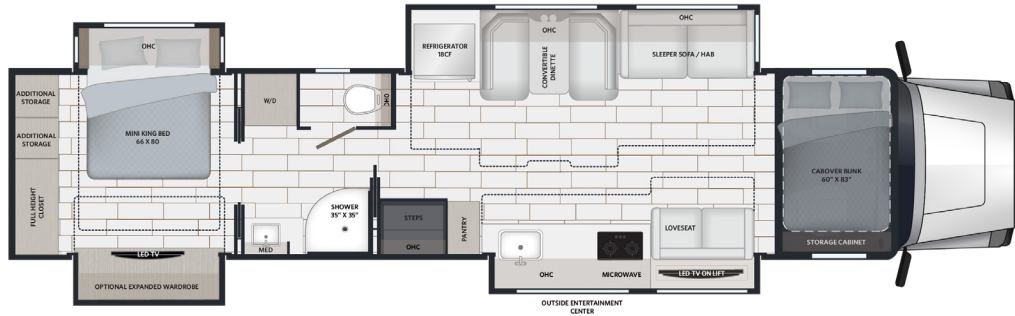
45CME



45CMR



45CRS

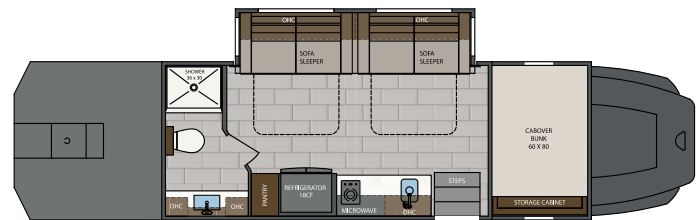


CLASSIC - TOTOR

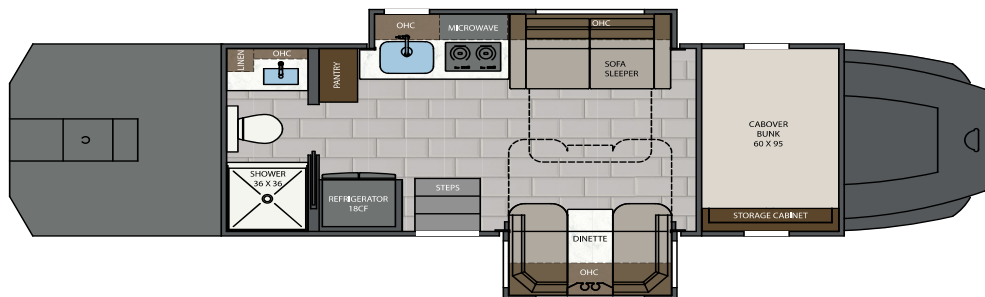
CS150



CS170

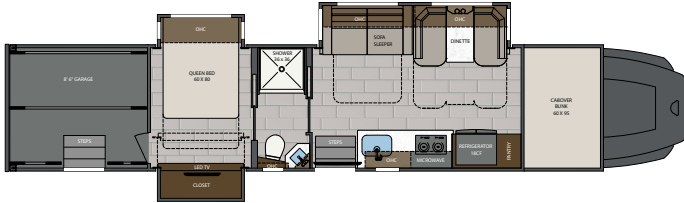


CS172



CLASSIC - GARAGE

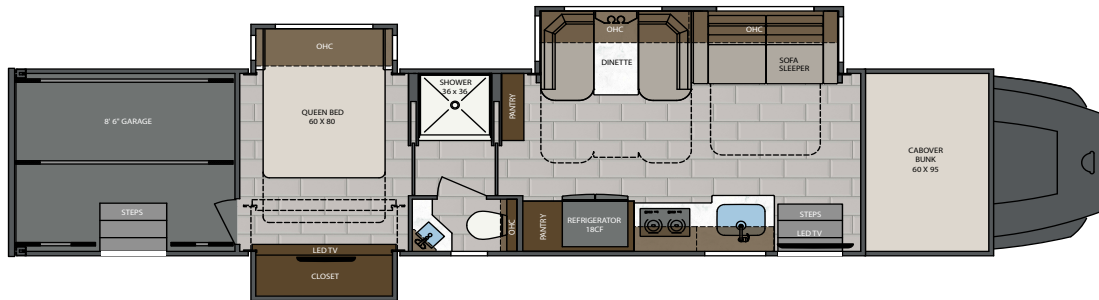
2509



2509GS



2609



The 2027 Renegade Classic lets you turn your dreams into reality.

With the Classic's versatile options, you can choose from multiple floorplans, colors, paint schemes, insulation applications, and chassis options, including toterhome and garage unit configurations. These are just a few of the unique features the Classic has to offer. Renegade also offers a personalized paint program tailored to your wants.

**The Garage and Toter floorplans have their own list of standards and options that are separate from the motorhome standards and options list in this sales sheet. Please contact dealer for details.*

THE RENEGADE RV 4-TIER PAINT PROGRAM

Our personalized paint program gives customers the freedom to select from a curated library of proven designs, then apply their own color choices or keep the design exactly as shown.

PICK THE OPTION THAT WORKS BEST FOR YOU!

TIER-1 | STANDARD DESIGN

TIER-2 | STANDARD DESIGN WITH PERSONALIZED COLORS

TIER-3 | STANDARD DESIGN WITH 3-STAGE PERSONALIZED COLORS

TIER-4 | FULLY CUSTOMIZED PERSONALIZED DESIGN

TOP FEATURES

CAB/CHASSIS

- Freightliner® Cascadia 116 DD13 Detroit DD13, 525 HP, 1,850 lb.-ft. of torque
- Freightliner® Cascadia 126 DD16 Detroit DD16, 600 HP, 1,850 lb.-ft. of torque
- Peterbilt® 567 605HP Cummins X15 Endurant 18-speed transmission, 1,850 lb.-ft. of torque
- Peterbilt® 589 605HP Cummins X15 Endurant 18-speed transmission, 2,050 lb.-ft. of torque
- 30,000 lbs. towing capacity
- Premium touch screen dash radio with bluetooth
- Auxiliary air chuck and hose (*Freightliner® Cascadia only*)

EXTERIOR

- Keyless entry lighted exterior entry door assist handle
- 2-stage Girard® Vision powered awning with LED lights and Girard slide toppers
- Four-point hydraulic leveling with app
- Power locking side-swing aluminum compartment doors
Includes single handle paddle latches, double catch, and steel storage compartments lined with carpet and motion activated lighting
- Diamond Shield® anti chip paint protection (*option non-paint/forced w/paint*)
- Frameless dual-pane tinted windows with screens
- HD shocks suspension upgrade (*forced option*)

CONSTRUCTION

- FRP
- Enhanced floor construction with composite underbelly

PLUMBING SYSTEMS

- Whole house water filtration system and SeeLevel® tank monitoring system
- Full maintenance wet bay with black tank flush, fresh water fill, outside faucet with sprayer and power hose reel
- Powered retractable water hose reel and hot and cold water spigot
- Electric dump valves with manual over ride
- Accumulator tank (constant pressure in water lines)

CHASSIS

MODEL	GARAGE	MOTORHOME	TOTER
Wheelbase	See sales for more information		
Front GAWR (lbs)	See sales for more information		
Rear GAWR (lbs)	See sales for more information		
GCWR (lbs)	See sales for more information		
Hitch Rating Weight (lbs)	See sales for more information		
Tongue Weight (lbs)	See sales for more information		
Fuel Capacity (gal)	120	120	120

INTERIOR

- Soft touch padded walls and ceiling
- 12"x 24" porcelain tile flooring throughout
- Dovetail drawers on soft close guides
- Pantry with push release drawer guides
- Solid Surface countertops throughout
- Ultraleather® furniture upholstery
- Panoramic window in kitchen w/wood frame
- Convertible booth dinette with storage
- Loveseat storage (*selected floorplans*)

APPLIANCES

- 18 cu. ft., French door stainless steel refrigerator with ice maker
- Flush mount 2-burner induction cooktop
- 1.7 cu. ft. stainless steel convection microwave oven
- Aqua-Hot® 450D hydronic water and zone heating, plus engine pre-heat
- (2 or 3) 15,000 BTU roof A/C with condensate heat pump
- Insulated thermafoil ducted A/C
- Central vacuum system with floor sweep feature
- MaxxAir® deluxe power vents with rain sensors
Powered roof vents that keep your RV fresh, cool, and comfortable.

ELECTRIC & ENTERTAINMENT

- 12.5kW Onan® quiet diesel generator with automatic start system (AGS) (8kW 38CSB)
- Dual 3,000W true sine wave inverter
- (3) 200W solar panels
- Transfer switch with surge protection
- (2) 270Ah lithium batteries
- Multiplex control system with bluetooth app control
- 4K smart LED TV in living area with soundbar and subwoofer
- Exterior entertainment center
4K smart LED TV soundbar and articulating arm extension & USB charging
- Multiplex control system with Wi-Fi app and touchscreen panel
- Camera Monitoring System - 360° w/recording, 10" HD screen, interior TV access, and trailer camera channels (N/A Toters and Garages)

DIMENSION & CAPACITIES

MODEL	GARAGE	MOTORHOME	TOTER
Overall Length	See sales for more information		
Overall Height	13'6"	13'6"	13'6"
Overall Width*	100.25"	100.25"	100.25"
Interior Height*	90"	90"	90"
Interior Width*	95.25"	95.25"	95.25"
Fresh Water Capacity (gal)	150	150	150
Gray Water Capacity (gal)	75	75	75
Black Water Capacity (gal)	75	75	75