

# 2027 EXPLORER TS



Scan here for more information on

2027 EXPLORER TS

## EXTERIORS

**FREIGHTLINER® CASCADIA 116 CHASSIS**  
 TANDEM AXLE  
 Horsepower: 525 HP  
 Torque: 1,850 lb. ft.  
 Transmission: DT12

**PETERBILT® 567 CHASSIS**  
 TANDEM AXLE  
 Horsepower: 605 HP  
 Torque: 1,850 lb. ft.  
 Transmission: Endurant 18



ELEVATION



HEMISPHERE



NAUTICA



NIGHTFALL



POLE STAR



ATLAS LR



MOJAVE



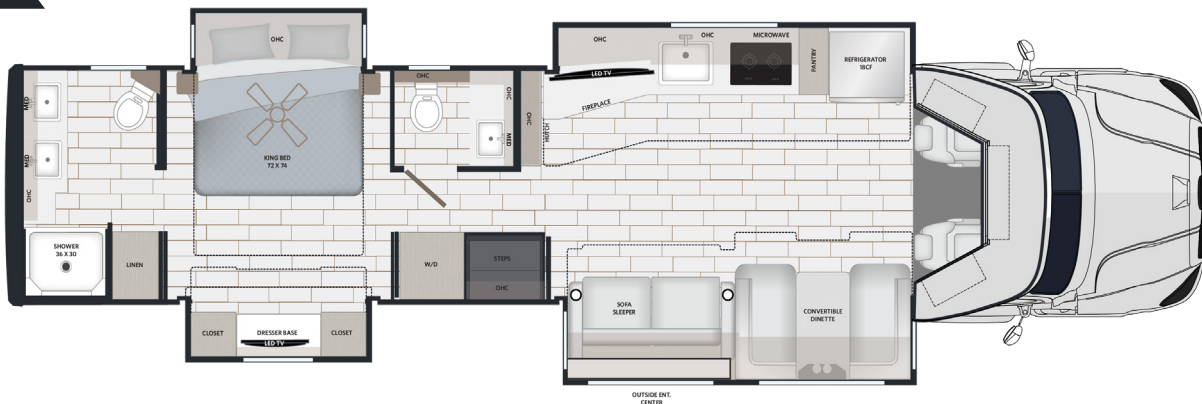
POLARIS



TUNDRA

## 42RB

**NEW FLOORPLAN**



## POPULAR OPTIONS

- Cabover Bunk w/Side Transitions, Windshield, Bunk Mat, and Storage Bins (*Freightliner only*)
- Ceramic Cab Driver/Passenger Window Tint w/IR Rejection
- Teak Seat in Shower

- Power Reclining Theatre Seat w/Head Tilt
- Heated Tile Flooring
- Washer & Dryer Stack
- Dishwasher
- Flo-Jet Sewage Macerator System

- Additional 3000W Inverter
- (1-2) 270Ah Lithium Battery Upgrade
- (1-2) 200W Solar Panel(s)
- Showermiser Water Mgmt System w/ Electronic Sensor

## TOP FEATURES

### CAB/CHASSIS

- Freightliner® Cascadia 116 tandem axle

*Detroit DD13, 525 HP, 1,850 lb.-ft. of torque*

- Peterbilt® 567 tandem axle

*605 HP Cummins X15, Endurant 18, 1,850 lb.-ft. of torque*

- 30,000 lbs. towing capacity

- 2-Years towing (See manufacturer for full details)

- Premium chassis package (Freightliner® only)

*Digital Dash Cluster and 10" Infotainment System with AM-FM Radio, Bluetooth, Apple® Carplay™, and Android® Auto™, and Side View Cameras on Separate Monitor from Infotainment, Upgraded Cab Sound System (Amplified Cab Speakers & Powered 8" Subwoofer)*

### EXTERIOR

- Keyless entry lighted exterior entry door assist handle
- Roof-mounted Girard® Vision awning featuring wind sensor and integrated LED lighting
- Four-point hydraulic leveling with app
- Power locking side-swing aluminum compartment doors  
*Includes single handle paddle latches, double catch, and steel storage compartments lined with carpet and motion activated lighting*
- Diamond Shield® anti chip paint protection
- Frameless dual-pane tinted windows with screens
- HD Shocks Suspension Upgrade ILO OEM

### CONSTRUCTION

- Vacuum-bonded laminated walls for lasting strength
- Welded aluminum roof truss construction, vacuum-bond laminated, with a seamless crowned fiberglass exterior
- Enhanced floor construction with composite underbelly

### PLUMBING SYSTEMS

- Whole house water filtration system with accumulator tank (constant pressure in water lines)
- SeeLevel® tank monitoring system
- Electric dump valves with manual over ride
- Dual 12V tank heaters on both gray and black tanks
- Full maintenance wet bay with black tank flush, fresh water fill, hot/cold outside faucet with sprayer and power hose reel

## CHASSIS

MODEL	42RB
Wheelbase	318
Front GAWR (lbs)	18,000
Rear GAWR (lbs) <b>Cascadia/Peterbilt</b>	40,000
GVWR (lbs) <b>Cascadia/Peterbilt</b>	58,000
Hitch Rating Weight (lbs)	30,000
Tongue Weight (lbs)	3,000
Fuel Capacity (gal)	120
GCWR (lbs) <b>Cascadia/Peterbilt</b>	80k/88k

### INTERIOR

- Soft touch padded walls and ceiling
- 12"x 24" porcelain tile flooring throughout
- Dovetail drawers on soft close guides
- Pantry with push release pull out drawers
- Solid maple custom cabinetry throughout
- LED dimmable lighting
- Convertible booth dinette with storage
- Sofa Bed (hide-a-bed)

### APPLIANCES

- 18 cu. ft., French door stainless steel refrigerator with ice maker
- Recessed 2-burner induction cooktop with solid surface covers
- 1.7 cu. ft. stainless steel convection microwave oven
- Aqua-Hot® 450D zoned hydronic heating and continuous hot water, plus engine pre-heat
- (3) 15,000 BTU roof A/C units with condensate drain and heat pump with decorative covers
- Insulated thermofoil ducted A/C
- Central vacuum system with floor sweep feature
- MaxxAir® power vents with rain sensors  
*Powered roof vents that keep your RV fresh, cool, and comfortable.*

### ELECTRIC & ENTERTAINMENT

- 12.5kW Onan® quiet diesel generator with automatic generator start (AGS)
- 3,000W true sine wave inverter
- (3) 200W solar panels
- Transfer switch with surge protection
- (2) 270Ah lithium batteries
- Multiplex control system with bluetooth app control
- 4K smart LED TV in living area with soundbar and subwoofer
- Exterior entertainment center  
*4K Smart LED TV soundbar and articulating arm extension*
- Electric fireplace w/storage
- Camera Monitoring System - 360° w/recording, 10" HD screen, interior TV access, and trailer camera channels
- Standard Starlink® with mobility mount

## DIMENSION & CAPACITIES

MODEL	42RB
Overall Length <b>Cascadia/Peterbilt</b>	42' 5"/42' 11"
Overall Height	13'1"
Overall Width*	99.25"
Interior Height*	84"
Interior Width*	95.5"
Fresh Water Capacity (gal)	150
Gray Water Capacity (gal)	75
Black Water Capacity (gal)	75