



Scan here for more information on

2027 VALENCIA

**FREIGHTLINER® S2RV PLUS CHASSIS**

Horsepower: 360 HP

Torque: 800 lb.-ft.

Transmission: 9-speed Auto (2909MH)

## EXTERIORS



ATMOS



ION



LUMINANCE



RECHARGE



ATLAS LR



MOJAVE

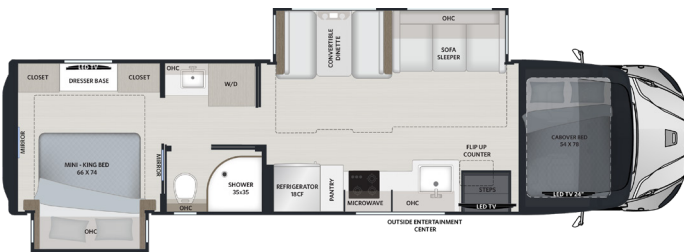


POLARIS

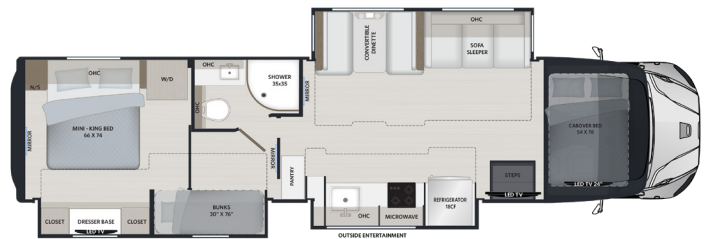


TUNDRA

### 36SB

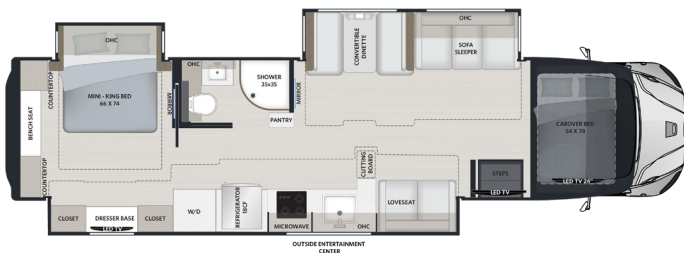


### 39BB



### 39FW

NEW FLOORPLAN



### 39RB



## POPULAR OPTIONS

- Matte Black Wheel Upgrade Package
- Caliber 9 Bright or Black Finish Grille Package
- HD Shocks Suspension Upgrade
- Dual-Stage Awning (n/a 36SB)
- Ceramic cab driver/passenger window tint w/IR rejection
- Bunk Closet Insert (39BB Only)
- Power Reclining Theater Seats with Heat & Massage
- (2) 270Ah Lithium Battery Upgrade
- (3) 200W Solar Panel System
- Winegard® In-Motion Satellite System
- Winegard® HD Satellite Trav'ler Pro
- Standard Starlink® with Mobility Mount
- Washer & Dryer Stack
- Flo-Jet Waste Tank Macerator

## TOP FEATURES

### CAB/CHASSIS

- Freightliner® S2RV Plus Chassis  
*Cummins® ISB 6.7L engine delivering 360 HP and 800 lb.-ft. of torque with an integrated VGT exhaust brake system.*
- 12,000 lbs. towing capacity
- Premium chassis package  
*Auto drain air brake valves, a Garmin® touchscreen with Bluetooth, GPS, and RV maps, rear and side view cameras on a dedicated color monitor, an upgraded JBL® cab sound system, and Freightliner® premium sound and thermal insulation package.*
- Auxiliary air chuck and hose
- LED Headlights (Hi/Lo Beam)

### EXTERIOR

- Aerodynamic fiberglass front and rear caps, transitions, and steps
- Powered Girard® GG lateral arm awning with LED lights and slide toppers
- Four-point hydraulic leveling with app
- Locking side-swing aluminum compartment doors  
*Includes single handle paddle latches, double catch and steel storage compartments lined with carpet, and motion activated lighting*
- Diamond Shield® anti chip paint protection
- Frameless dual-pane tinted windows with screens
- Panoramic window at kitchen

### CONSTRUCTION

- Vacuum-bonded laminated walls for lasting strength
- Welded aluminum roof truss construction, vacuum-bond laminated, with a seamless crowned fiberglass exterior
- Enhanced floor construction with composite underbelly

### PLUMBING SYSTEMS

- Whole house water filtration system
- SeeLevel® tank monitoring system
- LP quick disconnect
- Power hose reel
- Dual 12V tank heaters on both gray and black tanks

## CHASSIS

MODEL	36SB	39BB	39FW	39RB
Wheelbase	263"	293"	293"	293"
Front GAWR (lbs)	12,000	12,000	12,000	12,000
Rear GAWR (lbs)	21,000	23,000	23,000	23,000
GVWR (lbs)	33,000	35,000	35,000	35,000
Hitch Rating Weight (lbs)	12,000	12,000	12,000	12,000
Tongue Weight (lbs)	1,200	1,200	1,200	1,200
Fuel Capacity (gal)	100	100	100	100

### INTERIOR

- Double roller day/night shades
- High-grade LVP flooring throughout
- Sanded dovetail drawers on soft close guides
- Solid surface countertops throughout
- Solid maple custom cabinetry throughout
- LED dimmable lighting
- Memory foam mattress
- Convertible booth dinette with storage
- Sofa sleeper (*tri-fold*)

### APPLIANCES

- 18 cu. ft., stainless steel refrigerator with ice maker
- Recessed sealed 3-burner LP cooktop
- 1.7 cu. ft. stainless steel convection microwave oven
- Truma® AquaGo Comfort Plus tankless water heater
- (2) 15,000 BTU ducted roof A/C units featuring condensate drain and heat pump
- Insulated thermofoil ducted A/C
- MaxxAir® power vent with rain sensor  
*Powered roof vent that keep your RV fresh, cool, and comfortable.*

### ELECTRIC & ENTERTAINMENT

- 8kW Onan® quiet diesel generator with automatic generator start (AGS)
- 3,000W true sine wave inverter
- Transfer switch with surge protection
- Multiplex control system with bluetooth app control
- Smart LED TV with sound bar in living area
- Exterior entertainment center  
*Smart LED TV soundbar and articulating arm extension*
- Winegard® Connect OTA antenna with Wi-Fi and 5G ready

## DIMENSION & CAPACITIES

MODEL	36SB	39BB	39FW	39RB
Overall Length	36' 10"	39' 5"	39' 5"	39' 5"
Overall Height	12'10"	12'10"	12'10"	12'10"
Overall Width*	99.25"	99.25"	99.25"	99.25"
Interior Height*	84"	84"	84"	84"
Interior Width*	95.5"	95.5"	95.5"	95.5"
Fresh Water Capacity (gal)	150	150	150	150
Gray Water Capacity (gal)	75	75	75	75
Black Water Capacity (gal)	75	75	75	75
LP Capacity (gal)	20.3	20.3	20.3	20.3