



Scan here for more information on

2027 VERACRUZ

FORD® F600
Horsepower: 330 HP
Torque: 950 lb.-ft.
Transmission: 10-Speed Automatic

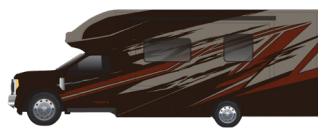
EXTERIORS



BOOST



CAMBER



REDLINE



TRAIL BOSS



ATLAS LR



MOJAVE

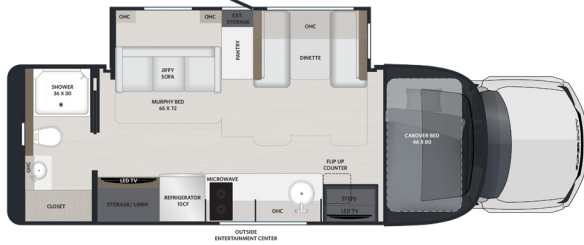


POLARIS



TUNDRA

30VRM



- MURPHY BED TO RECLAIM VALUABLE SPACE
- SMALL BUT MIGHTY
- EXCELLENT MOVE UP FROM SPRINTER FOR INCREASED TOWING, STORAGE AND SPACE

33VDS

NEW FLOORPLAN



- DUAL SLIDE FOR MAXIMUM SPACE
- RECONFIGURED LIVINGROOM/KITCHEN
- CROSS-CONVERSION SEATING (6-7 PEOPLE)

33VRS

NEW FLOORPLAN



- PASS THROUGH BATH
- REAR SUITE WITH NORTH AND SOUTH FACING BED
- ADDED WALKAROUND SPACE IN BEDROOM
- COMBO WASHER/DRYER OPTION
- GIANT GARAGE PASS-THRU STORAGE

POPULAR OPTIONS

- Powered Reclining Theater Seat with Tables (ILO Standard Dinette)
- Liquid Springs Adaptive System, 2" Lift at Front Axle, 4" Lift at Rear
- Winegard® In-motion Satellite System
- HD Shocks Suspension
- All Weather Cab Mats
- Standard Starlink® with Mobility Mount
- Combo Washer & Dryer (33VRS Only)
- 400Ah Lithium batts (max 2 for a total of 1200Ah)

TOP FEATURES

CAB/CHASSIS

- Ford® F600 4x4 XLT chassis
6.7L Power Stroke™ engine delivering 330HP and 950 lb-ft of torque with a 10-speed automatic transmission.
- 12,000 lb towing capacity
- Premium driving features
Dual fuel tanks (66.5 gal total), 4.2" LCD infotainment with Apple® CarPlay™, and Android® Auto™.
- Keyless cab entry (key fob)

EXTERIOR

- Aerodynamic fiberglass front and rear caps, transitions and steps
- Girard® GG lateral arm electric awning with LED lights paired with slide toppers
- Four-point hydraulic leveling system with app control
- Locking side-swing aluminum compartment doors
Includes single handle paddle latches with double catch and motion activated lighting
- Diamond Shield® Nano-Fusion™ *paint protection*
- Frameless dual-pane tinted windows with screens
- Ceramic Tint w/IR Rejection for reduced heat transfer

CONSTRUCTION

- Vacuum-bonded laminated walls and floors for lasting strength
- Welded aluminum roof truss construction, vacuum-bond laminated, with a seamless crowned fiberglass exterior
- Cabover bunk reinforced welded aluminum cage frame

PLUMBING SYSTEMS

- Whole house water filtration system
- SeeLevel® *tank monitoring system*
- Full maintenance wet bay with exterior spray away shower, on-demand water pump, and whole-house water filtration

INTERIOR

- Single roller day/night shades (*manual only*)
- High-grade vinyl flooring throughout
- Sanded dovetail drawers on soft close guides
- Solid surface countertops throughout
- LED dimmable lighting
- Memory foam mattress
- Convertible booth dinette with storage
- Sofa sleeper *tri-fold sleeper sofa (33VDS only)*

APPLIANCES

- 10 cu. ft., 12V stainless steel refrigerator
- Flush mount 2-burner induction cooktop
- 1.7 cu. ft. stainless steel convection microwave oven
- Truma® AquaGo Comfort **PLUS** tankless water heater
- 15,000 BTU roof A/C unit with condensate drain and heat pump
(1) 30VRM, (2) 32VDS & 32VRS
- 35,000 BTU LP ducted gas furnace

ELECTRIC & ENTERTAINMENT

- 8kW Onan® quiet diesel generator with automatic start system
- 3,000W true sine wave inverter
- Transfer switch with surge protection
- Multiplex control system with bluetooth app control
- 12V holding tank heaters, gray and black tanks
- 42" smart LED TV with sound bar and sub woofer
- Exterior entertainment center
27" Smart LED TV soundbar and articulating arm extension (n/a 33VRS)
- Winegard® Connect OTA antenna with Wi-Fi and 5G ready

CHASSIS

MODEL	30VRM	33VDS	33VRS
Wheelbase	205	238	238
Front GAWR (lbs)	7500	7500	7500
Rear GAWR (lbs)	14,500	14,500	14,500
GVWR (lbs)	22,000	22,000	22,000
Hitch Rating Weight (lbs)	12,000	12,000	12,000
Tongue Weight (lbs)	1,200	1,200	1,200
Fuel Capacity (gal)	66.5	66.5	66.5

DIMENSION & CAPACITIES

MODEL	30VRM	33VDS	33VRS
Overall Length	30' 5"	32' 5"	32' 5"
Overall Height	12'1"	12'1"	12'1"
Overall Width*	99.25"	99.25"	99.25"
Interior Height*	82"	82"	82"
Interior Width*	95.5"	95.5"	95.5"
Fresh Water Capacity (gal)	75	75	75
Gray Water Capacity (gal)	44	44	44
Black Water Capacity (gal)	44	44	44