



Scan here for more information on

2027 **XL**

FREIGHTLINER® CASCADIA
116 DD13 (525 HP) OR
126 DD16 (600 HP)
 Torque: 1,850 lb.-ft.
 Transmission: DT12 12-Speed Automatic

PETERBILT® 567, X15
 Horsepower: 605 HP
 Torque: 1,850 lb.-ft.
 Transmission: Endurant 18-speed

STANDARD EXTERIORS



ECLISPE



MERIDIAN



NEBULA



ORION

**NEW
COLOR**



SOLSTICE



ZENITH

NEW UPGRADE EXTERIORS



DOMINION



IMPERIAL



MONARCH



REGENT



SENTINEL



VANGUARD

SINGLE COLOR EXTERIORS



ATLAS LR



MOJAVE



POLARIS

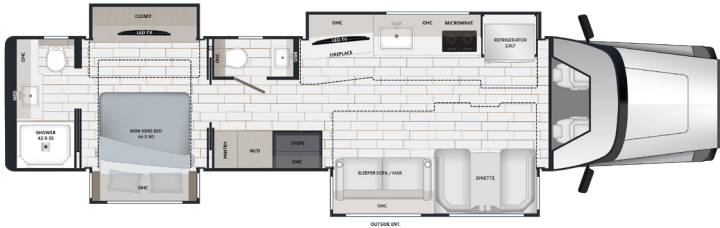


TUNDRA

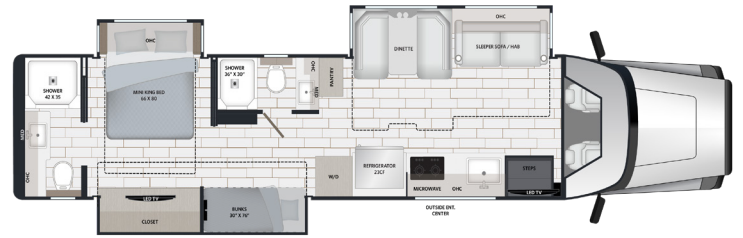
DIMENSION & CAPACITIES

MODEL	X43DB	X45BBC	X45DBM	X45QBH	X45QS
Overall Length	43' 6"	44' 11"	44' 11"	44' 11"	44' 11"
Overall Height	13'6"	13'6"	13'6"	13'6"	13'6"
Overall Width	99.25"	99.25"	99.25"	99.25"	99.25"
Interior Height	90"	90"	90"	90"	90"
Interior Width	95.25"	95.25"	95.25"	95.25"	95.25"
Fresh Water Capacity (gal)	150	150	150	150	150
Gray Water Capacity (gal)	75	75	75	75	75
Black Water Capacity (gal)	75	75	75	75	75

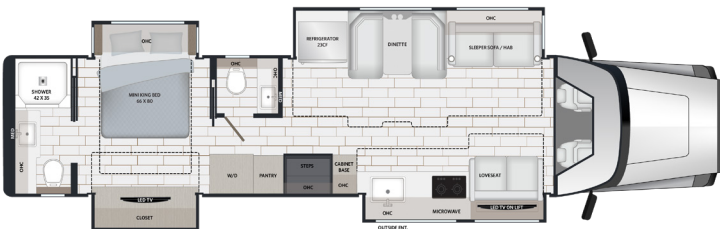
X43DB



X45BBC

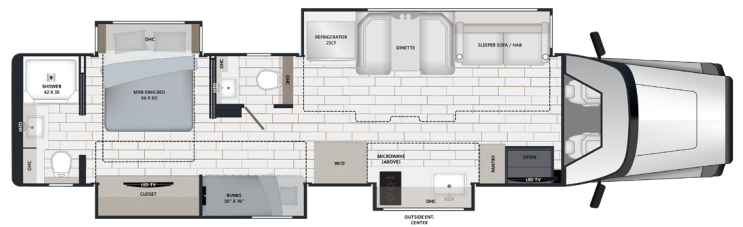


X45DBM

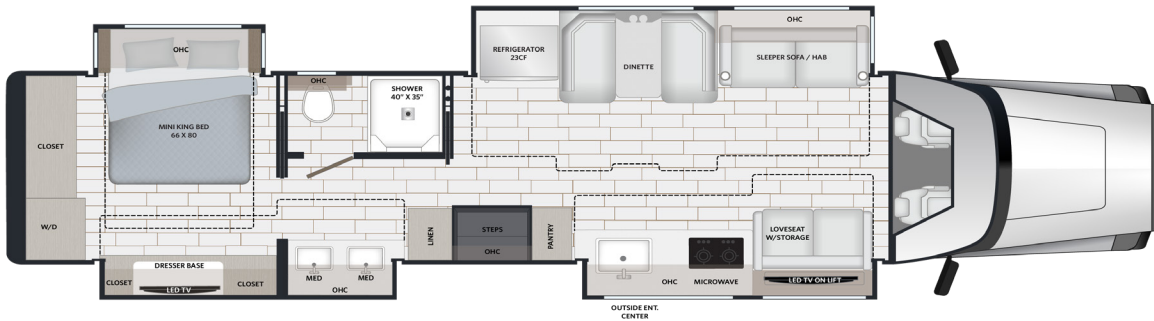


X45QBH

NEW FLOORPLAN



X45QS



POPULAR OPTIONS

- Powered Reclining Theater Seats w/Head Tilt
- Freightliner® Blackout Package
- Stacked Washer & Dryer
- Dishwasher
- Premium Exterior Refrigerator and Freezer on Slide Tray
- Exterior LED Scene Lights
- Ceramic Cab Driver/Passenger Window Tint w/IR Rejection

CHASSIS

MODEL	X43DB	X45BBC X45DBM X45QBH X45QS
Wheelbase <i>Cascadia/Peterbilt</i>	310"/?	345"/360"
Front GAWR (lbs) <i>Cascadia/Peterbilt</i>	18k	18k/20k
Rear GAWR (lbs)	40k	40k
GCWR (lbs) <i>Cascadia/Peterbilt</i>	80k/88.1k	80k/88.1k
Hitch Rating Weight (lbs)	30,000	30,000
Tongue Weight (lbs)	3,000	3,000
Fuel Capacity (gal)	120	120

TOP FEATURES

CAB/CHASSIS

- Freightliner® Cascadia 116 DD13
Detroit DD13, 525 HP, 1,850 lb.-ft. of torque
- Freightliner® Cascadia 126 DD16
Detroit DD16, 600 HP, 1,850 lb.-ft. of torque
- Peterbilt® 567
605HP Cummins X15 with an Endurant 18-speed transmission delivering 1,850 lb.-ft. of torque.
- 30,000 lbs. towing capacity
- Single 120gal aluminum fuel tank & 13-gal def tank
- Premium chassis package (*Freightliner® Cascadia P4 126 only*)
Digital Dash Cluster and 10" Infotainment System with AM-FM Radio, Bluetooth, Apple® Carplay™, and Android® Auto™, 360° Camera System with Backup and Side View Features, Upgraded Cab Sound System (Amplified Cab Speakers & Powered 8" Subwoofer, Collision Mitigation, Adaptive Cruise Control with Lane Departure Warning and Detroit® Connect Safety Event Viewer Package.
- Auxiliary air chuck and hose (*Freightliner® Cascadia only*)

EXTERIOR

- Keyless entry lighted exterior entry door assist handle
- (2) Roof-mounted, full length, Girard® Vision automatic 2-stage awnings w/motion sensors & LED lights
- Four-point hydraulic leveling with app
- Color changing LED lights under slideouts
- Power locking side-swing aluminum compartment doors
Includes single handle paddle latches with double catch, spray-lined steel storage compartments with motion activated lighting
- Diamond Shield® anti chip paint protection
- Frameless dual-pane tinted windows with screens
- HD shocks suspension upgrade

CONSTRUCTION

- Vacuum-bonded laminated walls for lasting strength
- Welded aluminum roof truss construction, vacuum-bond laminated, with a seamless crowned fiberglass exterior
- Enhanced floor construction with composite underbelly

PLUMBING SYSTEMS

- Whole house water filtration system and SeeLevel® tank monitoring system
- Flo-Jet sewage macerator system
- ShowerMiser water management system w/electronic sensor
- Full maintenance wet bay with black tank flush, fresh water fill, outside faucet with sprayer and power hose reel
- Powered retractable water hose reel and hot and cold water spigot
- Electric dump valves with manual over ride
- Accumulator tank (consistent pressure in water lines)

INTERIOR

- Soft touch padded walls and ceiling
- 12"x 24" heated porcelain tile flooring throughout
- Sanded dovetail drawers on soft close guides
- Maple hardwood custom cabinetry throughout
- Pantry with push release pull out drawers
- Cambria® quartz countertops throughout
- Mastrotto® Italian hide leather furniture
- Memory foam mattress
- Dinette booth with storage
- Loveseat storage (*45DBM & 45QS only*)

APPLIANCES

- 23 cu. ft., Samsung Bespoke® refrigerator with family hub
- Recessed 2-burner induction cooktop
- 1.7 cu. ft. stainless steel convection microwave oven
- Aqua-Hot® 600D zoned hydronic heating and continuous hot water, plus engine pre-heat
- (3) 15,000 BTU roof A/C units with condensate drain & heat pump
- Insulated thermofoil ducted A/C
- Central vacuum system with floor sweep feature
- MaxxAir® deluxe power vents with rain sensor
Powered roof vents that keep your RV fresh, cool, and comfortable.

ELECTRIC & ENTERTAINMENT

- 12.5kW Onan® quiet diesel generator with automatic generator start (AGS)
- (2) 3,000W true sine wave inverters
- Up to (6) 200W solar panels *floorplan dependent*
- Transfer switch with surge protection
- (4) 270Ah lithium batteries
- Multiplex control system with Bluetooth app control
- 4K smart LED TV in living area with soundbar and subwoofer
- Exterior entertainment center
4K Smart LED TV soundbar and articulating arm extension
- Winegard® Connect OTA antenna with Wi-Fi and 5G ready
- USB/USB-C charging throughout
- Camera Monitoring System - *360° w/recording, 10" HD screen, interior TV access, and trailer camera channels*
- Electric fireplace w/storage (*43DB only*)
- Standard Starlink® with mobility mount