

CLASS SUPER C • DIESEL

2027 EXPLORER TS



RENEGADERV.COM



Scan here for more information on

2027 EXPLORER TS

FREIGHTLINER® CASCADIA 116 CHASSIS
TANDEM AXLE
Horsepower: 525 HP
Torque: 1,850 lb. ft.
Transmission: DT12

EXTERIORS



ELEVATION



HEMISPHERE



NAUTICA



NIGHTFALL



POLE STAR



ATLAS LR



MOJAVE



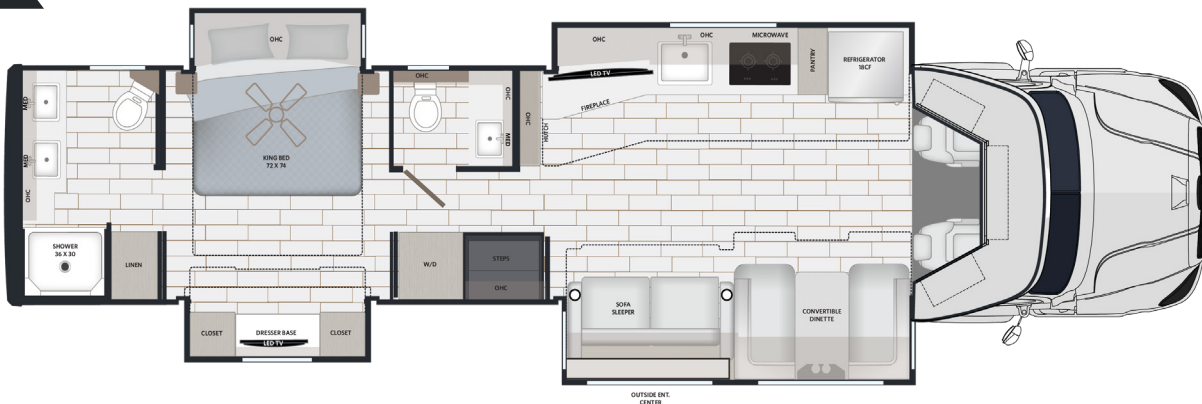
POLARIS



TUNDRA

42RB

NEW FLOORPLAN



POPULAR OPTIONS

- Cabover Bunk w/Side Transitions, Windshield, Bunk Mat, and Storage Bins
- Ceramic Cab Driver/Passenger Window Tint w/IR Rejection
- Teak Seat in Shower

- Power Reclining Theatre Seat w/Head Tilt
- Heated Tile Flooring
- Washer & Dryer Stack
- Dishwasher
- Flo-Jet Sewage Macerator System

- Additional 300W Inverter
- (1-2) 270Ah Lithium Battery Upgrade
- (1-2) 200W Solar Panel(s)
- Showermiser Water Mgmt System w/ Electronic Sensor

TOP FEATURES

CAB/CHASSIS

- Freightliner® Cascadia 116 tandem axle
Detroit DD13, 525 HP, 1,850 lb.-ft. of torque
- 30,000 lbs. towing capacity
- 2-Years towing (*See manufacturer for full details*)
- Premium chassis package

Digital Dash Cluster and 10" Infotainment System with AM-FM Radio, Bluetooth, Apple® Carplay™, and Android® Auto™, and Side View Cameras on Separate Monitor from Infotainment, Upgraded Cab Sound System (Amplified Cab Speakers & Powered 8" Subwoofer)

EXTERIOR

- Keyless entry lighted exterior entry door assist handle
- Roof-mounted Girard® Vision awning featuring wind sensor and integrated LED lighting
- Four-point hydraulic leveling with app
- Power locking side-swing aluminum compartment doors
Includes single handle paddle latches, double catch, and steel storage compartments lined with carpet and motion activated lighting
- Diamond Shield® anti-chip paint protection
- Frameless dual-pane tinted windows with screens
- HD Shocks Suspension Upgrade ILO OEM

CONSTRUCTION

- Vacuum-bonded laminated walls for lasting strength
- Welded aluminum roof truss construction, vacuum-bond laminated, with a seamless crowned fiberglass exterior
- Enhanced floor construction with composite underbelly

PLUMBING SYSTEMS

- Whole house water filtration system with accumulator tank (consistent pressure in water lines)
- SeeLevel® tank monitoring system
- Electric dump valves with manual over ride
- Dual 12V tank heaters on both gray and black tanks
- Full maintenance wet bay with black tank flush, fresh water fill, hot/cold outside faucet with sprayer and power hose reel

CHASSIS

MODEL	42RB
Wheelbase	318
Front GAWR (lbs)	18,000
Rear GAWR (lbs)	40,000
GVWR (lbs)	58,000
Hitch Rating Weight (lbs)	30,000
Tongue Weight (lbs)	3,000
Fuel Capacity (gal)	120
GCWR (lbs)	80,000

INTERIOR

- Soft-touch padded walls and ceiling
- 12"x 24" porcelain tile flooring throughout
- Dovetail drawers on soft close guides
- Pantry with push release pull out drawers
- Solid maple custom cabinetry throughout
- LED dimmable lighting
- Convertible booth dinette with storage
- Sofa bed (hide-a-bed)

APPLIANCES

- 18 cu. ft., French door stainless steel refrigerator with ice maker
- Recessed 2-burner induction cooktop with solid surface covers
- 1.7 cu. ft. stainless steel convection microwave oven
- Aqua-Hot® 450D zoned hydronic heating and continuous hot water, plus engine pre-heat
- (3) 15,000 BTU roof A/C units with condensate drain and heat pump with decorative covers
- Insulated thermofoil ducted A/C
- Central vacuum system with floor sweep feature
- MaxxAir® power vents with rain sensors
Powered roof vents that keep your RV fresh, cool, and comfortable.

ELECTRIC & ENTERTAINMENT

- 12.5kW Onan® quiet diesel generator with automatic generator start (AGS)
- 3,000W true sine wave inverter
- (3) 200W solar panels
- Transfer switch with surge protection
- (2) 270Ah lithium batteries
- Multiplex control system with bluetooth app control
- 4K smart LED TV in living area with soundbar and subwoofer
- Exterior entertainment center
4K Smart LED TV soundbar and articulating arm extension
- Electric fireplace w/storage
- Camera Monitoring System - 360° w/recording, 10" HD screen, interior TV access, and trailer camera channels
- Standard Starlink® with mobility mount

DIMENSION & CAPACITIES

MODEL	42RB
Overall Length	42' 11"
Overall Height	13'1"
Overall Width*	99.25"
Interior Height*	84"
Interior Width*	95.5"
Fresh Water Capacity (gal)	150
Gray Water Capacity (gal)	75
Black Water Capacity (gal)	75